



## EUROPEAN SCHOOLS CHESS CHAMPIONSHIP 2026

**Age categories under 7, 9, 11, 13, 15, 17, Open and Girls  
Trogir, Croatia, April 26<sup>th</sup> – May 6<sup>th</sup>, 2026**



### GENERAL REGULATIONS

#### 1. Invitation

The European Chess Union (ECU), together with the Croatian Chess Federation, invite all National Chess Federations of ECU to participate at EUROPEAN SCHOOLS CHESS CHAMPIONSHIP, organized in the city of Trogir, Split-Dalmatia County, Croatia, between April 26<sup>th</sup> (arrival) – May 6<sup>th</sup> (departure), 2026.

Trogir is a historic town and port in Croatia, in the Split-Dalmatia County, known for its well-preserved medieval core, which is listed as a UNESCO World Heritage Site.

#### 2. Participants & Registration

2.1. Entitled to participate are chess players from ECU member Federations, according to their age category:

- Tournaments Under 07 (Open & Girls), player's date of birth: January 1<sup>st</sup> 2019 and after
- Tournaments Under 09 (Open & Girls), player's date of birth: January 1<sup>st</sup> 2017 and after
- Tournaments Under 11 (Open & Girls), player's date of birth: January 1<sup>st</sup> 2015 and after
- Tournaments Under 13 (Open & Girls), player's date of birth: January 1<sup>st</sup> 2013 and after
- Tournaments Under 15 (Open & Girls), player's date of birth: January 1<sup>st</sup> 2011 and after
- Tournaments Under 17 (Open & Girls), player's date of birth: January 1<sup>st</sup> 2009 and after

2.2. Each ECU member federation can register an unlimited number of players that meet the age requirements of each of the 12 respective sections.

2.3. The Champions (1<sup>st</sup> place) in the previous European School Championships have the personal right, as invited players, to participate in the tournament of the corresponding age-category or a higher age-category, if

they fulfill the conditions of ECU Rules (Article K.1.1). For players with personal rights, the board and lodging costs (in double or triple rooms) from the official day of arrival until breakfast on the day of departure will be covered by the Organizer.

2.4 According to the ECU Rules (Article B.14.5.1), for youth tournaments the participants are accommodated in the official hotels. Access to playing areas and venues will be allowed only to persons accredited by the Organizer.

2.5. In order to ensure proper championship standards, all players and invited players have to register through their national federations. The entry form should be filled in by the national federation on the official website of the championship. **Registration must be done before March 27<sup>th</sup>** (registration deadline). After that date, federations will not be able to register players and invited players, or to modify their registration. After the registration deadline, late registrations must be confirmed by the organizer and the ECU.

2.6. Accreditations, badges and access to the venues and facilities and transfers will be allowed only to registered persons.

### 3. Venue, Dates & Schedule

3.1. The venue of the championship is the **Congress Hall of the "Medena" Hotel**.

3.2. Schedule of the championship:

Sunday	April 26 <sup>th</sup>		Arrival day
Monday	April 27 <sup>th</sup>	10:30	Technical meeting
Monday	April 27 <sup>th</sup>	14:00	Opening ceremony
Monday	April 27 <sup>th</sup>	15:00	1 <sup>st</sup> round
Tuesday	April 28 <sup>th</sup>	15:00	2 <sup>nd</sup> round
Wednesday	April 29 <sup>th</sup>	15:00	3 <sup>rd</sup> round
Thursday	April 30 <sup>th</sup>	15:00	4 <sup>th</sup> round
Friday	May 1 <sup>st</sup>	15:00	5 <sup>th</sup> round
Saturday	May 2 <sup>nd</sup>	15:00	6 <sup>th</sup> round
Sunday	May 3 <sup>rd</sup>	15:00	7 <sup>th</sup> round
Monday	May 4 <sup>th</sup>	15:00	8 <sup>th</sup> round
Tuesday	May 5 <sup>th</sup>	13:00	9 <sup>th</sup> round
Tuesday	May 5 <sup>th</sup>	20:30	Closing ceremony
Wednesday	May 6 <sup>th</sup>		Departure date

3.3 Players from those federations which are not represented and confirmed as participants at the technical meeting, may not be paired.

#### 4. Fees

4.1. In accordance with the ECU regulations, the entry fee of 40 EUR is required for each player and invited player.

4.2. According to the ECU regulations, federations are obliged to make the payment of the ECU fee on the ECU bank account before the start of the championship. If the entry fee does not reach the ECU bank account by the end of the second round, these participants will not be paired in subsequent rounds. The ECU fees must be paid to the account of the European Chess Union:

Holder: European Chess Union  
Bank: Credit Suisse, Postfach 357, CH - 6301 Zug  
BIC: CRESCHZZXXX  
IBAN Code: CH3604835183510542000

4.3. The organization fee of 50 EUR for each participant - player, invited player, head of delegation and accompanying person, must be paid by **March 27<sup>th</sup>** to the bank account of the organizer.

#### 5. Travel conditions

5.1. The organizer recommends that participants use the Split Airport for their arrival, which is located just a 15-minute drive from the Hotel "Medena". The airport is very well connected to many European destinations and also has 3-4 daily flights to and from Zagreb Airport.

5.2. Transfer from and to Split International Airport is 30 €/person/two ways, on the arrival and on departure official days. For other arrival and departure days, conditions for the transfers must be confirmed with the organizers.

#### 6. System & Rate of Play

The championship is based on Swiss system in accordance with the ECU Championship Rules and FIDE Rules of Chess. The time rate will be 90 minutes with an increment of 30 seconds per move, starting from move one. Default time is 15 minutes after the start of each round.

#### 7. Ranking & Tie-Break System

The order of players that finish with the same number of points shall be determined by application of the following tie-breaking procedures in sequence, proceeding from (a) to (b) to (c) to (d) to (e) the extent required:

- a) Results of direct encounters between the tied players.
- b) Buchholz Cut 1
- c) Buchholz
- d) The greater number of games played with black
- e) The greater number of wins.

In the case of unplayed games, for the calculation of tiebreak criteria the current FIDE Championship Rules shall be applied.

#### 8. Qualifying & Prizes

8.1 Gold, silver, and bronze cups will be awarded for 1<sup>st</sup>, 2<sup>nd</sup> and 3<sup>rd</sup> place. Participants who finish between 4<sup>th</sup> and 10<sup>th</sup> place in each group will receive medals. Additionally, all top ten finishers will get a present from the organizers.

8.2 The champions of each European School Championship category shall have the personal right to participate as invited players in the 2027 European School Championship of the corresponding or of a higher age category (according to K.1.3).

8.3 All players will receive Certificates of Participation.

## 9. Arbiters & Appeals Committee

The Chief Arbiter, Deputy Arbiters and the Chairman of the Appeals Committee will be appointed by the European Chess Union and their names will be published in a timely manner.

## 10. Appeals Procedure

Protests against decisions of the Chief Arbiter must be submitted in written form to the Chairman of the appeals committee within one hour after the end of the respective game. The protest must be accompanied with the sum of 200 €, as a deposit from the signatory. If the appeal is granted, the sum shall be returned immediately. If the appeal is refused, the deposit is forfeited to the European Chess Union. The appeal must be lodged by the player. The decisions of the Appeals Committee are final.

## 11. Lodging & Meals

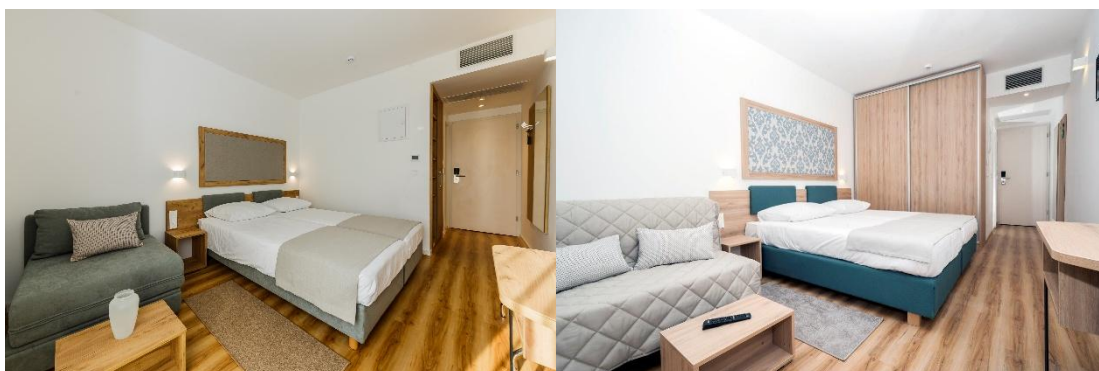
Accommodation for participants and their accompanying persons is provided on a full-board basis at the "Medena" hotel complex, according to the following prices, depending on the room type and category:

### **Superior New rooms (4\*)**

Single room: 105 € per person

Double room: 84 € per person

Triple room: 77 € per person



### **Superior Sea Side rooms and Superior rooms with a French balcony (3\*)**

Single room: 99 € per person

Double room: 79 € per person

Triple room: 72 € per person







## 12. Registration and Payment

12.1. To provide appropriate tournament conditions, representatives of national federations must complete the official registration form carefully. **and submit it to the Organizers by Friday, March 27<sup>th</sup>, 2026.**

12.2. Payments for the participation fee (50 € per person) as well as for hotel costs for all participants must be made to the following account by the aforementioned registration deadline (Friday, March 27<sup>th</sup>):

Owner: Croatian Chess Federation  
Bank: Agram Banka d.d.  
IBAN: HR7824810001120011240  
SWIFT code: KREZHR2X

12.3. All bank commissions must be paid by the sender, if they are not paid, the organizer will provide an invoice which must be paid before the start of the championship.

## 13. Additional Regulations

13.1. Only the players and arbiters shall be allowed in the playing area, except with the express permission of the Chief Arbiter.

13.2. The European Anti-Cheating rules are valid for all the European Championships. (Article Q of the ECU Championship Rules).

13.3. During European Youth Championship, random Anti-Cheating inspections are made.

## 14. Visas

Any federation members, players and accompanying persons who need a visa to enter Croatia, are requested to contact the Organizer before the **March 20<sup>th</sup>**. Schengen visas are valid in Croatia.

## 15. Contact information

Official website: <https://hrvatski-sahovski-savez.hr/european-school-2026/>

E-mail: [ecuschool2026@gmail.com](mailto:ecuschool2026@gmail.com)

**Tournament Director:** Branimir Jukić, Vice President of the Croatian Chess Federation  
**CRO CF Secretary General:** Daria Grgurić, WhatsApp +385 99 377 6460